

Cheetah HC 60M 330-350 Watt

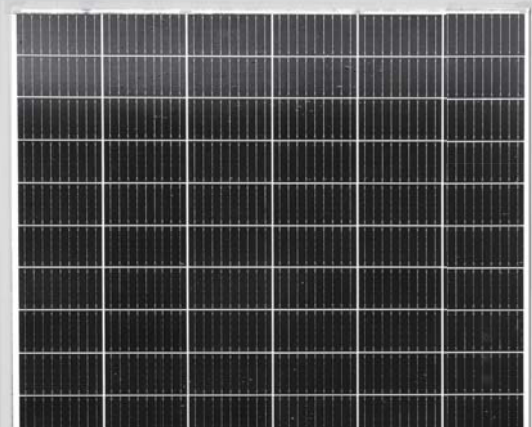
N-TYPE MONO CRYSTALLINE MODULE

Positive power tolerance of 0~+3%

- Half Cell
- N-Type Mono 60 Cell



N-type



KEY FEATURES



N-type HOT Technology

N-type HOT technology makes 20.74% mono-facial module efficiency



9 Busbar Solar Cell

9 busbar solar cell adopts new technology to improve the efficiency of modules, offers a better aesthetic appearance, making it perfect for rooftop installation



PID Resistance

Excellent Anti-PID performance guarantee limited power degradation



Better Low-light Performance

Advanced glass and cell surface textured design ensure excellent performance in low-light environment



Saving BOS Cost

Designed for high voltage systems of up to 1500 VDC, saving BOS cost



Durability Against Extreme Environmental Conditions

High salt mist and ammonia resistance certified by TUV NORD



Higher Lifetime Power Yield

Superior Warranty: 30 years performance warranty;
1% First year degradation 0.4% Linear power degradation

LINEAR PERFORMANCE WARRANTY

15 Year Product Warranty 30 Year Linear Power Warranty
0.4% Annual Degradation Over 30 years

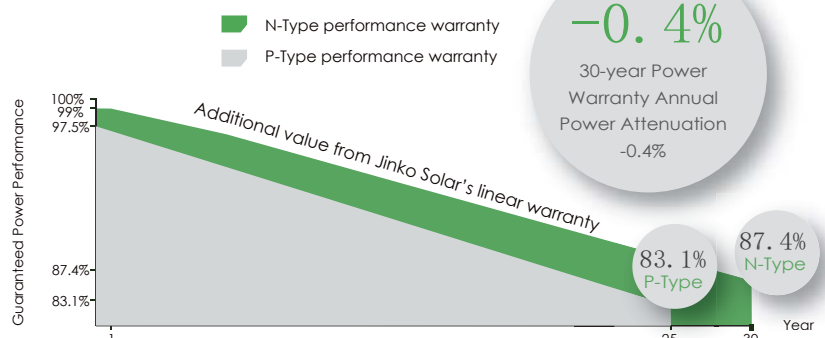


- ISO9001:2015, ISO14001:2015, ISO 45001:2018 certified factory
- IEC61215(2016), IEC61730(2016) certified product

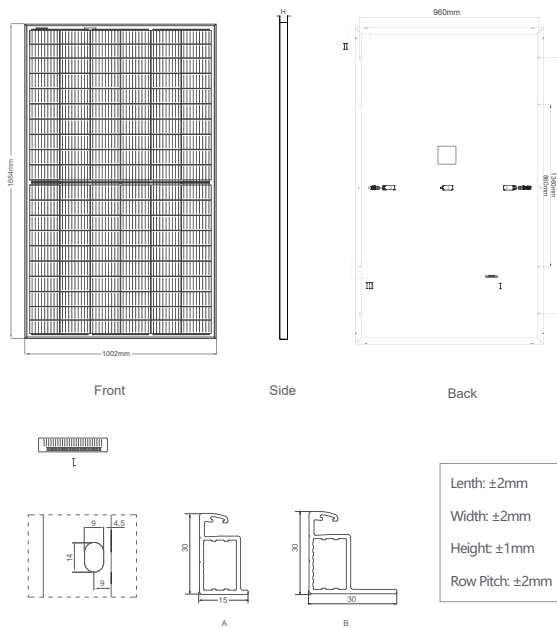
Nomenclature:

JKMxxxM-60/72H-V

Code	Cell	Code	Certification
null	Full	null	1000V
H	Half	V	1500V



Engineering Drawings

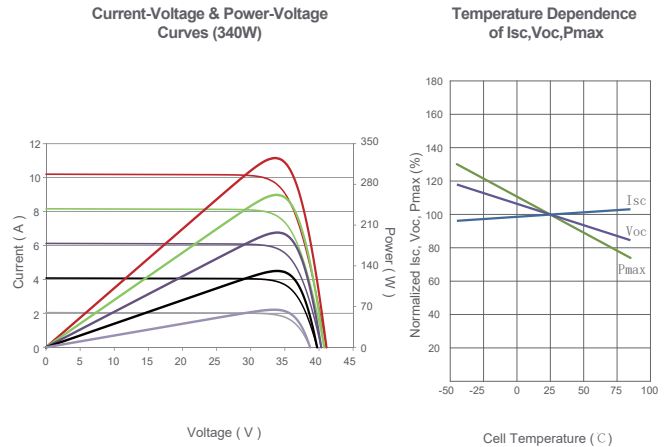


Packaging Configuration

(Two pallets = One stack)

35pcs/pallet, 70pcs/stack, 910pcs/40'HQ Container

Electrical Performance & Temperature Dependence



Mechanical Characteristics

Cell Type	N-type 158.75×158.75mm
No. of Half-cells	120 (6×20)
Dimensions	1684×1002×30mm (66.30×39.45×1.18 inch)
Weight	18.5 kg (40.8 lbs)
Front Glass	3.2mm, Anti-Reflection Coating, High Transmission, Low Iron, Tempered Glass
Frame	Anodized Aluminium Alloy
Junction Box	IP67 Rated
Output Cables	TÜV 1x4.0mm ² , (+) 290mm, (-) 145mm or Customized Length

SPECIFICATIONS

Module Type	JKM330N-60H-MBB		JKM335N-60H-MBB		JKM340N-60H-MBB		JKM345N-60H-MBB		JKM350N-60H-MBB	
	JKM330N-60H-MBB-V	JKM335N-60H-MBB-V	JKM330N-60H-MBB-V	JKM335N-60H-MBB-V	JKM340N-60H-MBB-V	JKM345N-60H-MBB-V	JKM340N-60H-MBB-V	JKM345N-60H-MBB-V	JKM350N-60H-MBB-V	JKM350N-60H-MBB-V
	STC	NOCT	STC	NOCT	STC	NOCT	STC	NOCT	STC	NOCT
Maximum Power (Pmax)	330Wp	246Wp	335Wp	250Wp	340Wp	254Wp	345Wp	257Wp	350Wp	261Wp
Maximum Power Voltage (Vmp)	33.24V	30.83V	33.37V	31.11V	33.47V	31.30V	33.60V	31.52V	33.72V	31.79V
Maximum Power Current (Imp)	9.93A	7.98A	10.04A	8.03A	10.16A	8.10A	10.27A	8.16A	10.38A	8.21A
Open-circuit Voltage (Voc)	40.21V	37.95V	40.34V	38.07V	40.47V	38.20V	40.60V	38.32V	40.73V	38.44V
Short-circuit Current (Isc)	10.52A	8.50A	10.58A	8.55A	10.64A	8.59A	10.70A	8.64A	10.76A	8.69A
Module Efficiency STC (%)	19.56%		19.85%		20.15%		20.45%		20.74%	
Operating Temperature (°C)	-40°C~+85°C									
Maximum System Voltage	1000/1500VDC (IEC)									
Maximum Series Fuse Rating	20A									
Power Tolerance	0~+3%									
Temperature Coefficients of Pmax	-0.34%/°C									
Temperature Coefficients of Voc	-0.28%/°C									
Temperature Coefficients of Isc	0.048%/°C									
Nominal Operating Cell Temperature (NOCT)	45±2°C									

STC: Irradiance 1000W/m² Cell Temperature 25°C AM=1.5

NOCT: Irradiance 800W/m² Ambient Temperature 20°C AM=1.5 Wind Speed 1m/s

* Power measurement tolerance: ± 3%