

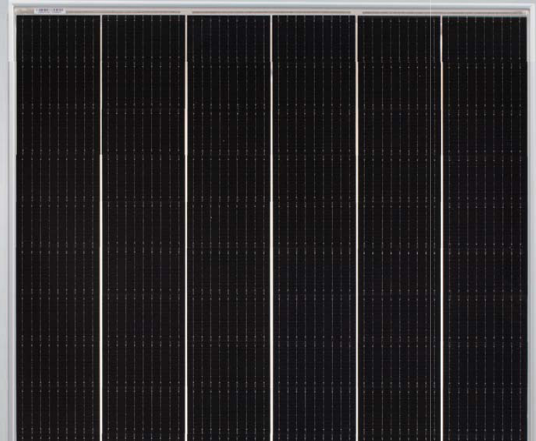
Cheetah Mono-facial

395-415 Watt

Tiling Ribbon (TR) Technology

Positive power tolerance of 0~+3%

N-Type



KEY FEATURES



TR technology + Half Cell

TR technology with Half cell aims to eliminate the cell gap to increase module efficiency (mono-facial up to 21.74%)



Low Light Induced Degradation

The N-type cell shows extremely low light induced degradation (LID) performance when comparing with the P-type cell.



9BB instead of 5BB

9BB technology decreases the distance between bus bars and finger grid line which is benefit to power increase.



Higher lifetime Power Yield

1% first year degradation,
0.4% linear degradation



Best Warranty

15 year product warranty,
30 year linear power warranty



Better low-light performance

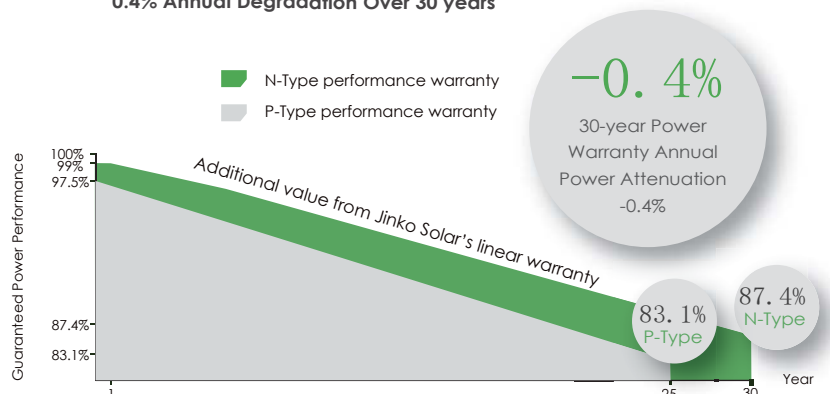
Excellent performance in low-light environments (e.g. early morning, dusk, and cloud, etc.)



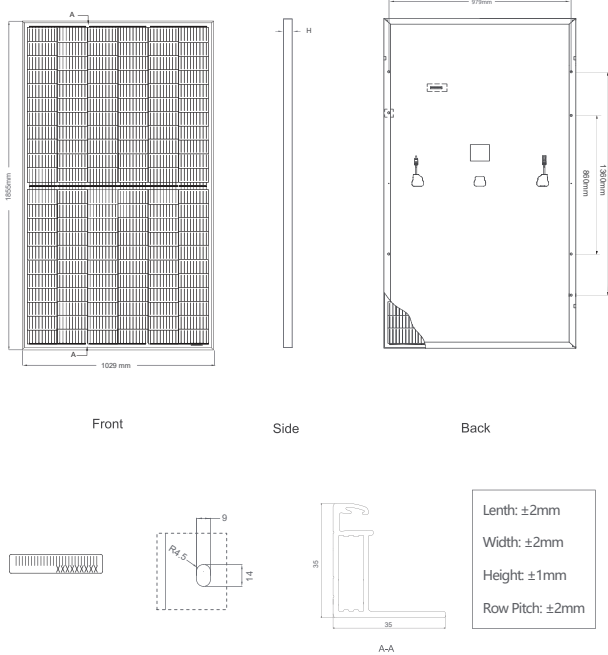
- ISO9001:2015, ISO14001:2015, OHSAS18001 certified factory
- IEC61215, IEC61730 certified product

LINEAR PERFORMANCE WARRANTY

15 Year Product Warranty 30 Year Linear Power Warranty
0.4% Annual Degradation Over 30 years



Engineering Drawings

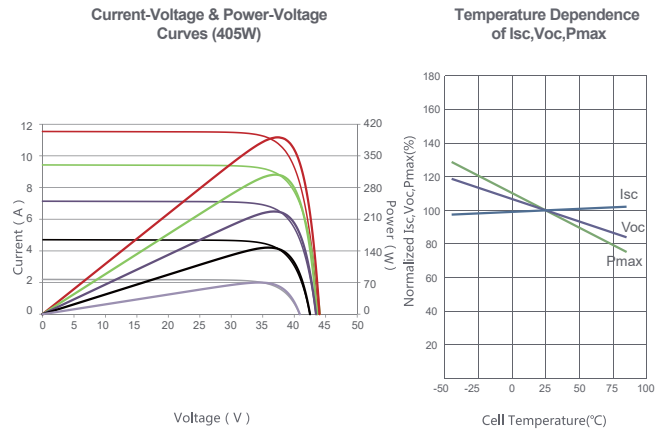


Packaging Configuration

(Two pallets = One stack)

31pcs/pallets, 62pcs/stack, 744pcs/ 40'HQ Container

Electrical Performance & Temperature Dependence



Mechanical Characteristics

Cell Type	N type Mono-crystalline
No. of cells	132 (2×66)
Dimensions	1855×1029×35mm (73.03×40.51×1.37 inch)
Weight	21.3 kg (46.74 lbs)
Front Glass	3.2mm, Anti-Reflection Coating, High Transmission, Low Iron, Tempered Glass
Frame	Anodized Aluminium Alloy
Junction Box	IP67 Rated
Output Cables	TUV 1×4.0mm ² (+): 290mm, (-): 145 mm or Customized Length

SPECIFICATIONS

Module Type	JKM395N-6RL3		JKM400N-6RL3		JKM405N-6RL3		JKM410N-6RL3		JKM415N-6RL3	
	JKM395N-6RL3-V	JKM400N-6RL3-V	JKM405N-6RL3-V	JKM410N-6RL3-V	JKM415N-6RL3-V	STC	NOCT	STC	NOCT	STC
Maximum Power (Pmax)	395Wp	295Wp	400Wp	298Wp	405Wp	302Wp	410Wp	306Wp	415Wp	309Wp
Maximum Power Voltage (Vmp)	36.58V	33.35V	36.67V	33.43V	36.76V	33.55V	36.84V	33.63V	36.92V	33.71V
Maximum Power Current (Imp)	10.80A	8.83A	10.91A	8.92A	11.02A	9.00A	11.13A	9.09A	11.24A	9.18A
Open-circuit Voltage (Voc)	43.23V	40.72V	43.33V	40.81V	43.43V	40.90V	43.53V	41.00V	43.63V	41.09V
Short-circuit Current (Isc)	11.69A	9.44A	11.80A	9.53A	11.91A	9.62A	12.02A	9.71A	12.13A	9.80A
Module Efficiency STC (%)	20.69%		20.96%		21.22%		21.48%		21.74%	
Operating Temperature(°C)	-40°C~+85°C									
Maximum system voltage	1000/1500VDC (IEC)									
Maximum series fuse rating	20A									
Power tolerance	0~+3%									
Temperature coefficients of Pmax	-0.34%/°C									
Temperature coefficients of Voc	-0.28%/°C									
Temperature coefficients of Isc	0.048%/°C									
Nominal operating cell temperature (NOCT)	45±2°C									

* STC: Irradiance 1000W/m² Cell Temperature 25°C

AM=1.5

NOCT: Irradiance 800W/m² Ambient Temperature 20°C

AM=1.5

Wind Speed 1m/s

* Power measurement tolerance: ± 3%